



# St. Luke's Episcopal Church

September 9, 2017



# I-30 Project



The 7.3-mile project extends:

- along I-30 from I-530 to the south and I-40 to the north
- along I-40 to its interchange with Hwy. 67 in North Little Rock

Convergence of six major interstates/highways:

I-30	I-530	I-440
I-630	I-40	Hwy. 67

Major components

- River bridge replacement
- Capacity Improvements
- Interchange improvements
- Ramp modifications



# Project Study and Public Input

## PEL (2014 – 2015)

- Purpose and need
- Alternatives development / evaluation
- Traffic and safety
- Early collaboration with stakeholders

## NEPA (2015 – Today)

- Schematic Development
- Environmental Assessment
- Alternatives
- Parks
- Cultural resources
- Floodplains
- Community impacts
- Visual and aesthetics

2014

2015

2016

2017



## Public Involvement

- More than 180 total meetings
- More than 50 different groups, boards, councils
- More than 30 technical agencies
- More than 115 hours with public officials
- More than 1,700 attendees at public meetings

# NEPA/Environmental Progress



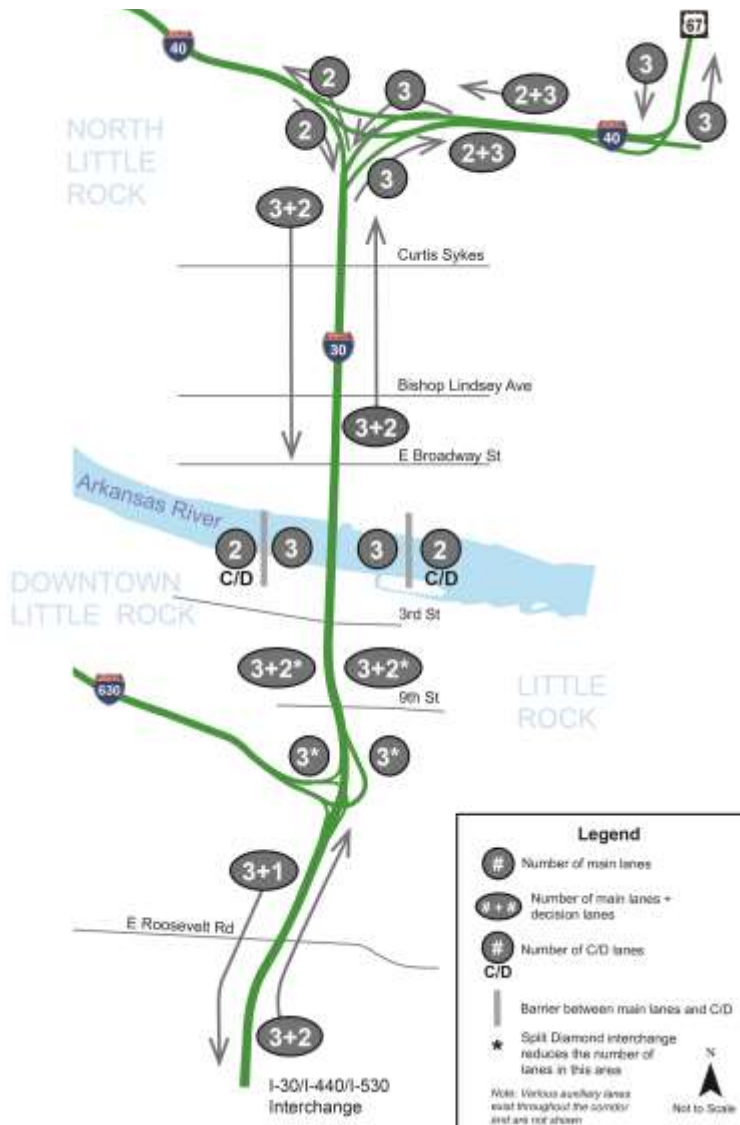
**Community Assessment**  
**Traffic Noise**  
**Cultural Resources**  
**Indirect/Cumulative Impacts**



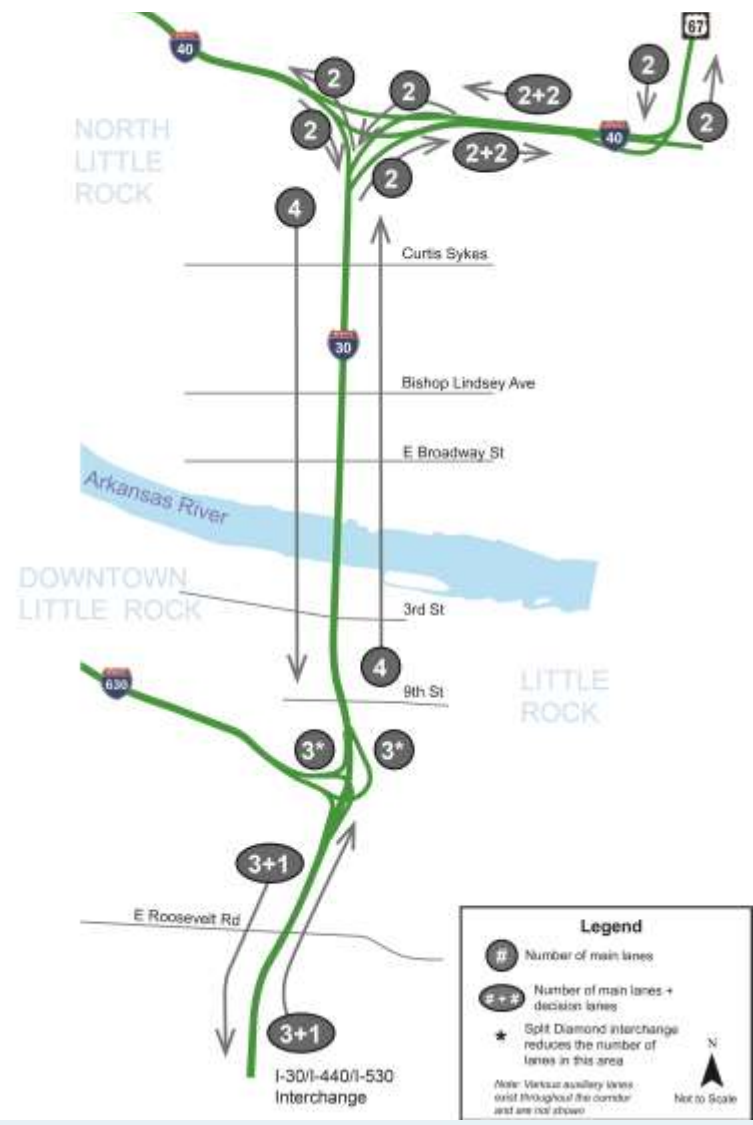
**Wetlands**  
**Air Quality**  
**Park Impacts**  
**Hazardous Materials**

# Proposed Build Alternatives

## 6-Lane with C/D



## 8-Lane GP (PEL)



# Proposed Cantrell Interchange Improvements

## SPUI

- **Interchange will remain.** There will be a partial interchange at 6<sup>th</sup> Street.
- Interchange will be **reduced in size**, creating potential green space.
- Interchange will **keep traffic patterns** similar to existing conditions.

## Split Diamond

- **Interchange will be eliminated.**
- Only downtown interchange ramps will be at 4<sup>th</sup> and 9<sup>th</sup> streets.
- **Traffic will be spread throughout the downtown roadway network.**
- Interchange will have a much smaller footprint than the existing interchange.



# Cantrell Elevated SPUI

- Keeps traffic patterns similar to what they are today, but improves interchange design.



# Cantrell Elevated SPUI

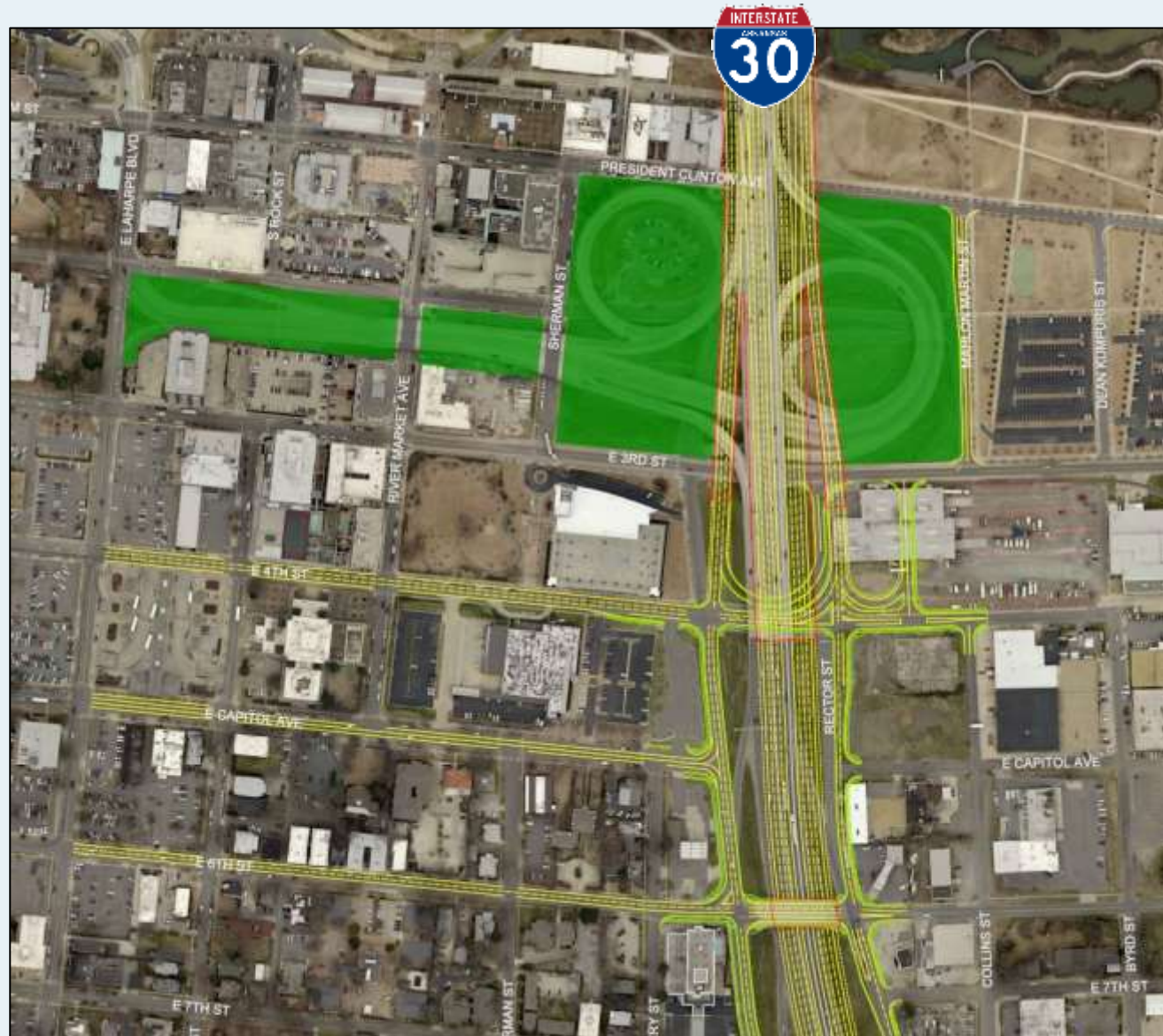
- Keeps traffic patterns similar to what they are today, but improves interchange design.





# Split Diamond

Cantrell  
interchange  
is removed



# Split Diamond Interchange

- Interchange moved south and disperses traffic in downtown grid
- 8-Lane access with I-30 is direct entrance and exit
- 6-Lane access with I-30 involves C/D lanes



# Split Diamond

## Exit I-30



# Split Diamond

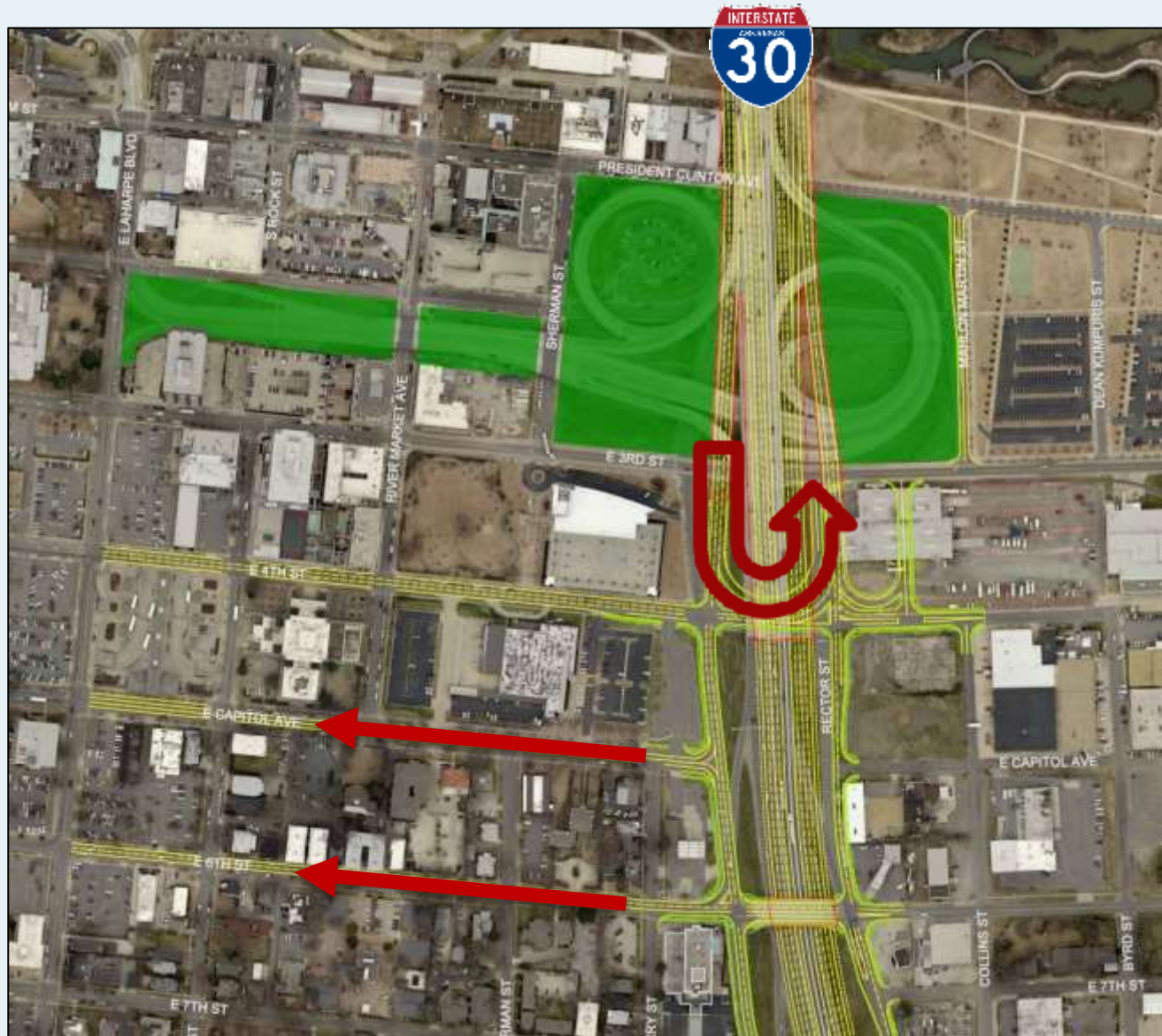
## Enter I-30

6-Lane with C/D



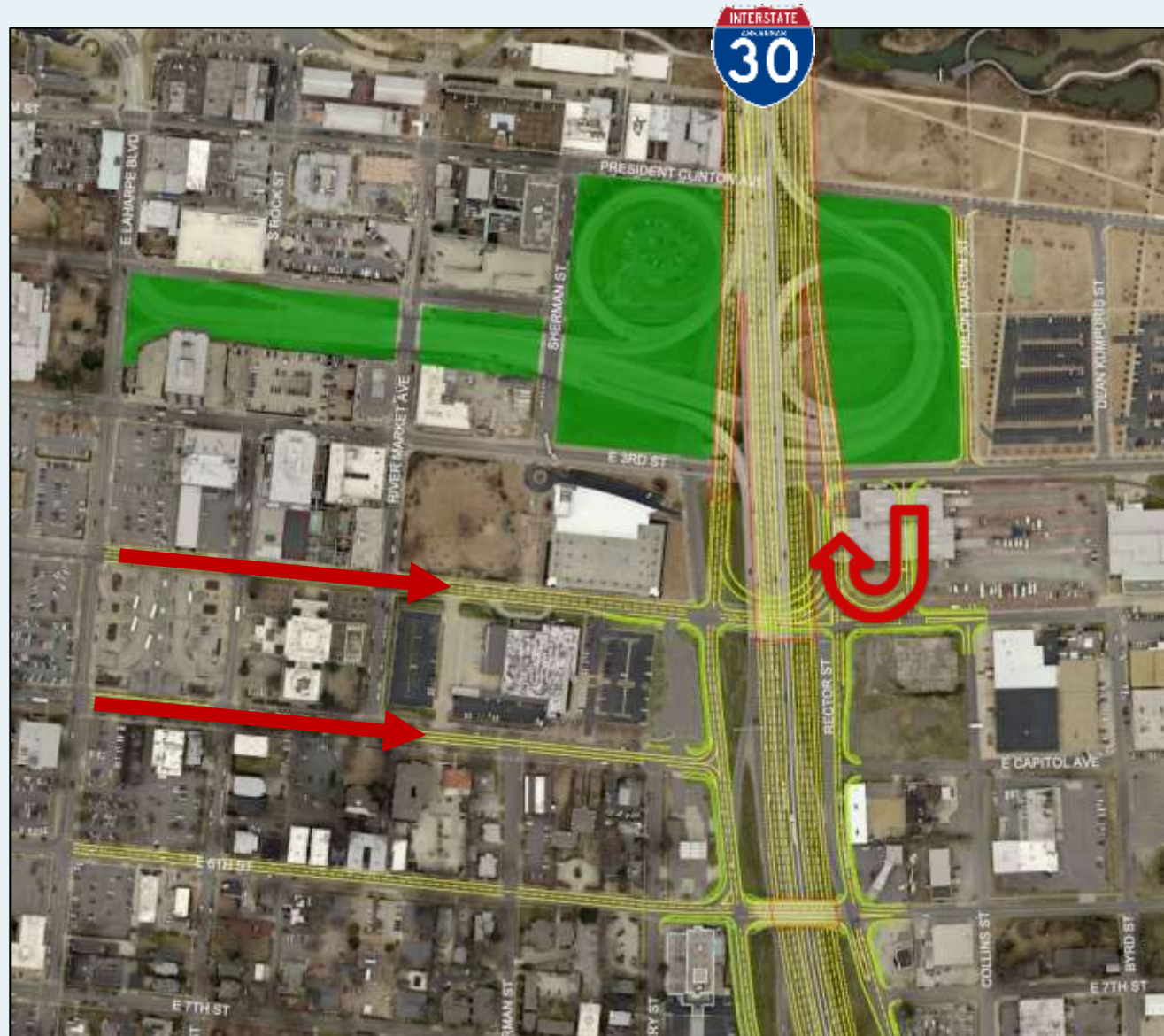
# Split Diamond

Going  
West



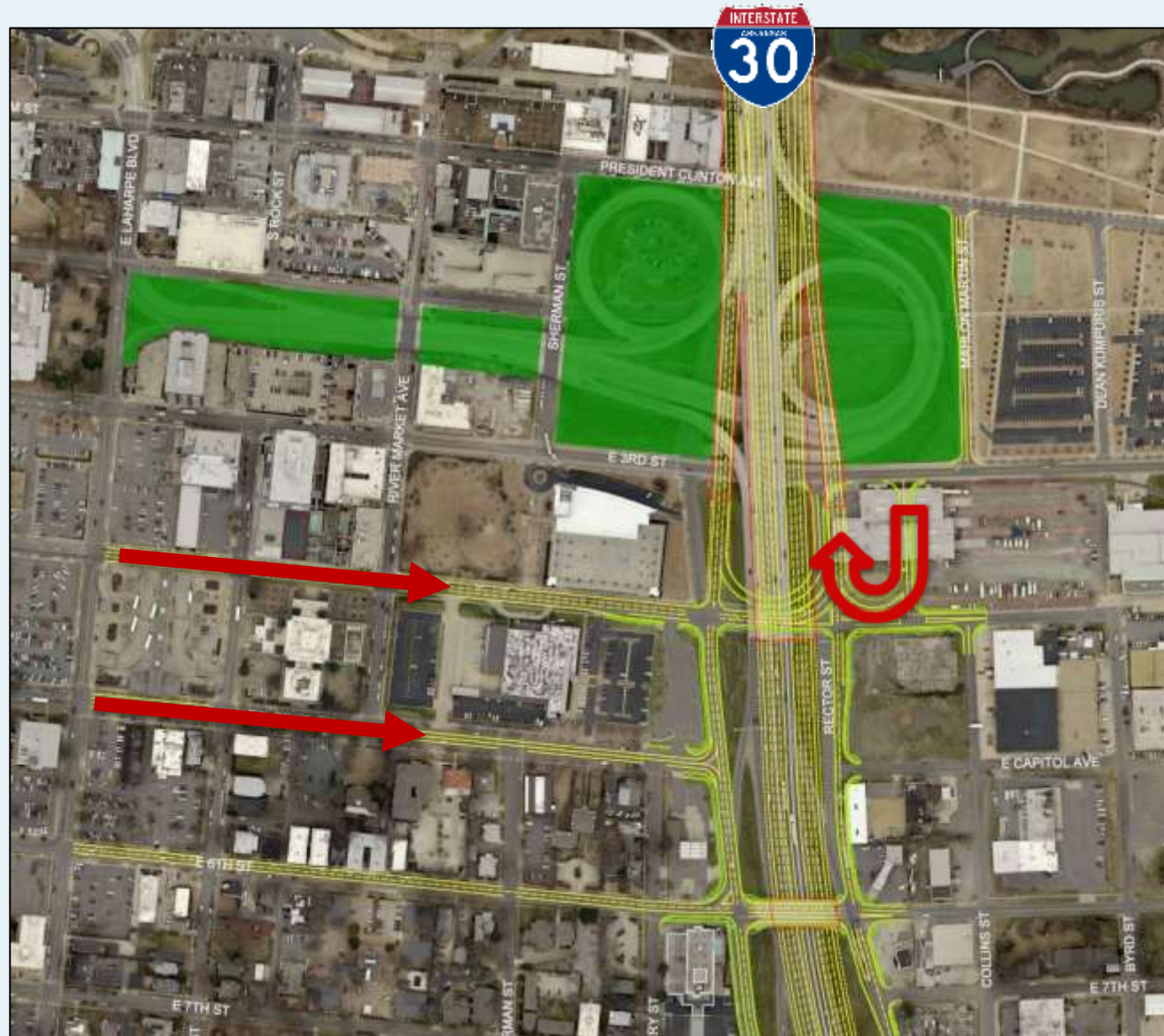
# Split Diamond

Going  
East



# Split Diamond

Going  
East



# I-30/I-40 Interchange

**I-40**

Westbound





# I-30/I-40 Interchange

I-40  
to  
I-30



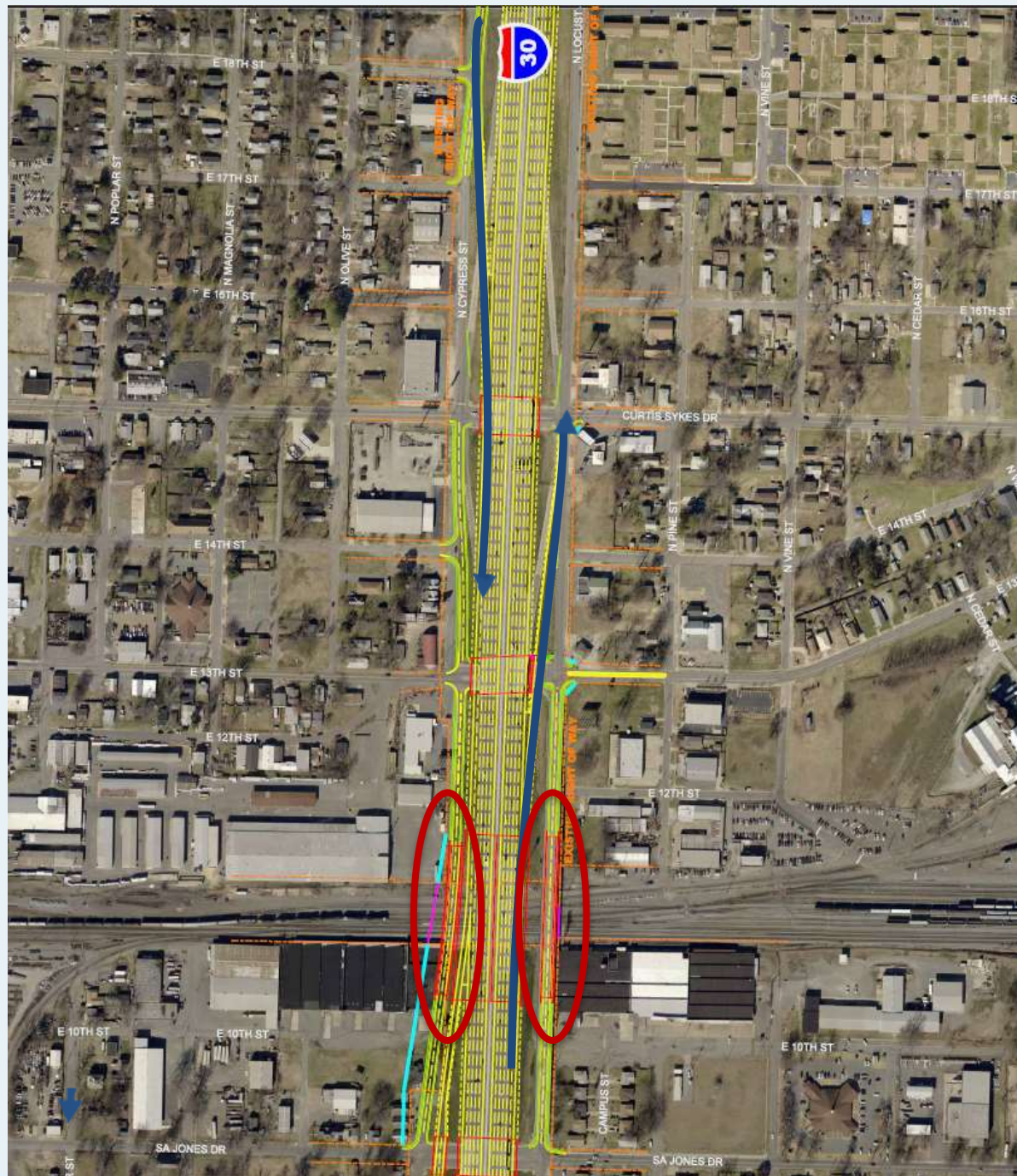
# I-30/I-40 Interchange

**19<sup>th</sup>  
Street  
Exit**  
(Replaces  
Curtis  
Sykes  
Exit)



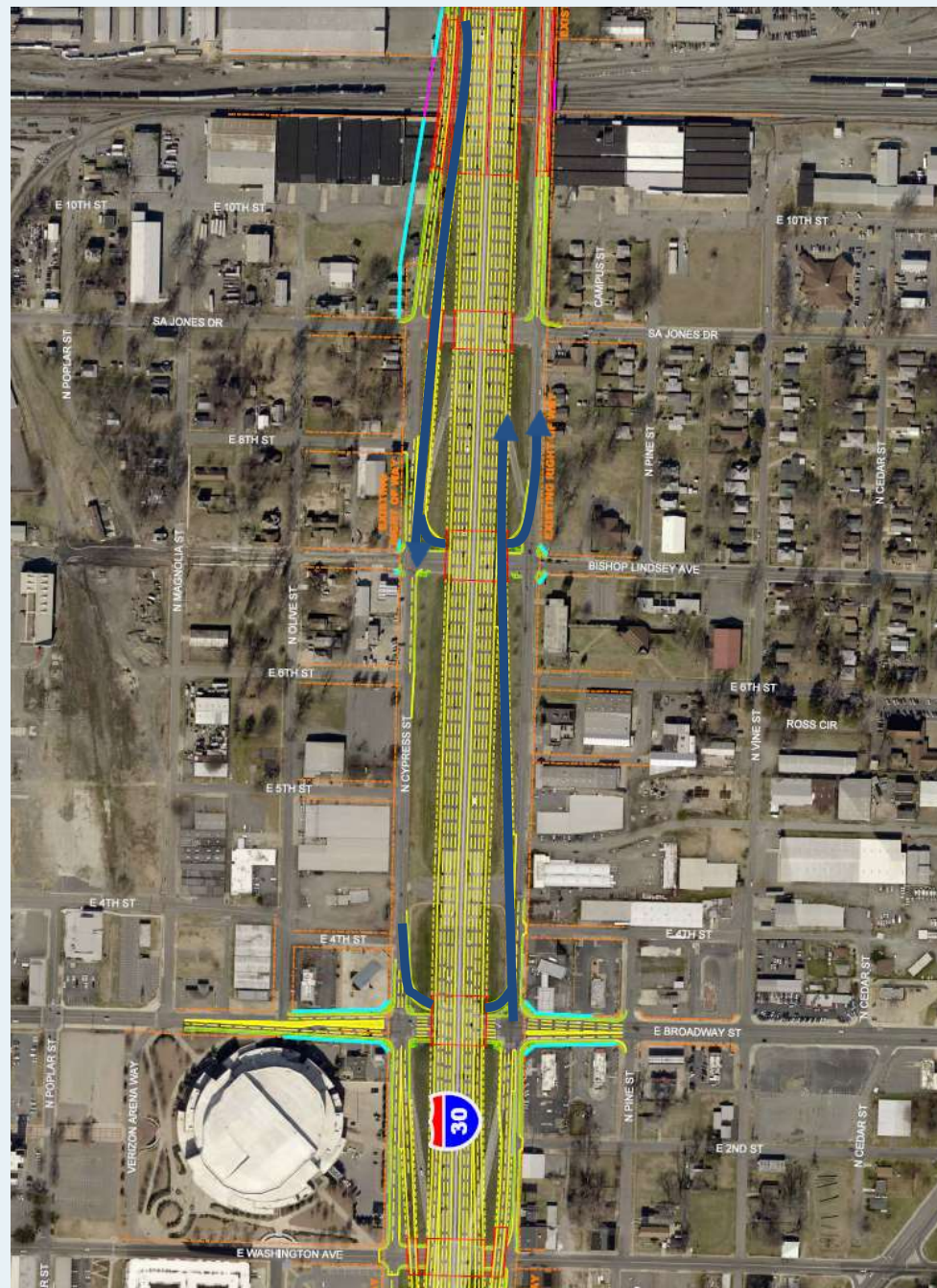
# I-30 in NLR (North of UPRR)

- Southbound access onto I-30
- Northbound access off of I-30
- New Cypress Street bridge over UPRR
- Reconstructed Locust Street bridge over UPRR.



# I-30 in NLR (South of UPRR)

- Southbound access off of I-30
- Northbound access onto I-30
- New Cypress Street bridge over UPRR
- Reconstructed Locust Street bridge over UPRR.



# NEPA and D-B Schedule



# Comments/Questions

- **Email:**
  - [Info@30Crossing.com](mailto:Info@30Crossing.com)
  - [Info@ConnectingArkansasProgram.com](mailto:Info@ConnectingArkansasProgram.com)
- **Phone:**
  - 501-255-1519
- **Web:**
  - [www.30Crossing.com](http://www.30Crossing.com)
  - [www.ConnectingArkansasProgram.com](http://www.ConnectingArkansasProgram.com)

# 30Crossing.com

This project proposes to enhance one of the most traveled roads in Arkansas. When complete, the improvements will enhance the transportation connection through central Arkansas, increase capacity, and improve traveler safety.



## Know the Facts!

A collection of some of the most frequently asked questions concerning the 30 Crossing project.



## Latest Materials!

See the most up-to-date information and documents related to the 30 Crossing project.



Newsroom



Public Meetings



PEL Report



I-30 Comment Form